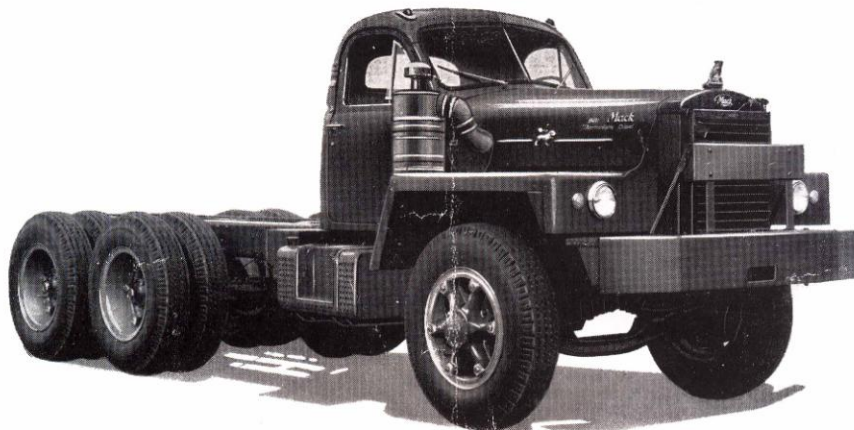




B-81SX & B-813SX



SIX-WHEEL • DIESEL • TRUCK

GRATIFYING PROFITS and long trouble-free life are provided in these ruggedly designed, diesel powered six-wheel trucks. They are capable of successfully adjusting to the varying demands of speed and strength in heavy-duty, off-highway, dumper, mixer, logging, oil field and carry-all tractor operations.

ABUNDANT POWER for severe conditions and rapid acceleration when required is supplied by Mack's naturally aspirated or turbo-charged Thermodyne diesel. Producing 170 or 205 horsepower, Mack's diesel engines are famous for their economy of operation.

UNMATCHED ADAPTABILITY and dependability is assured by a wide selection of all-new, all-Mack component equipment. The already famous 20-speed, Quadruplex transmission offers a wider range of speed steps than is possible with the customary combination of transmission and auxiliary. A five or ten-speed and auxiliary transmission is available for oil field work.

DRIVING COMFORT is assured in Mack's newly styled cab providing ample head room, elbow room and leg room for the biggest driver. Features include an easily entered driver's position, fully adjustable driver's seat and a convenient arrangement of controls.

MODELS B-81SX & B-813SX

STANDARD EQUIPMENT (Cont'd.)

WHEELS:

TypeCast, spoke

STEERING GEAR:

ModelSG 26
 TypeWorm and roller
 Ratio28.4
 Steering wheel, diameter.....22"

CAB: (Mack)

ModelCA 30
 TypeAll metal, welded, unified
 cab and cowl
 Overall width70⁵/₈" Maximum
 (67" at belt rail)

INSTRUMENT PANEL GAUGES: Tachometer single-hand type, speedometer, ammeter; air pressure, fuel, temperature and lube oil pressure gauges—all mounted on removable panel. Engine stop controls; throttle control.

CHASSIS EQUIPMENT: Painting in synthetic enamel (Mack green, red, yellow, blue, orange or black); Military type steel fenders; channel type front bumper; front tow pin; radiator guard; sealed-beam headlights; combination stop and tail light, electric horn; defroster nozzles; automatic radiator shutters; low air pressure buzzer type indicator; dual air-actuated windshield wipers, single motor; sun visor, left side; rim lug wrench or disc wheel wrench and handle.

STANDARD CHASSIS WEIGHT, (lbs.):

B-81SX: Front 8,115; Rear 9,550; Total 17,665
 B-813SX: Front 8,165; Rear 9,550; Total 17,715

OPTIONAL EQUIPMENT

WHEELBASES:

*174 ¹ / ₂ "	168"
**186 ¹ / ₂ "	192"
199 ¹ / ₂ "	216"
212 ¹ / ₂ "	240"
#303 ¹ / ₂ "	288"

Platform:

AIR STARTING SYSTEM:

MakeIngersoll-Rand
 Rating10 horsepower
 ActuationManually controlled quick
 opening air valve in cab

TRANSMISSIONS: (Mack)

TR 7205-speed, with Auxiliary
 TRD 72010-speed, two-lever
 Duplex with Aux.

Additional option: TRQ 720 with R.H. & L.H. P.T.O. openings in compound case.

AUXILIARY TRANSMISSION:

(with TR 720 or TRD 720 only)

ModelB-L 8031 C
 Type3-speed, with power tower

BOGIE: (Mack)

#ModelSWD 59
 Bogie wheelbase54"
 DriveFour wheel, straight through
 Inter-axle differentialMack concentric cam
 and plunger Power Divider
 CarriersCRDP 95 & CRD 96
 †Ratios8.15, 9.02, 10.57, 11.80
 SpringsSee standard

†Ratio 9.02 or 8.15 recommended for Dumpers and Mixers.

SPRINGS: (Heavy Duty)

Location	#Rear	††Rear	#Front
Size	54" x 5"		51 ⁵ / ₈ " x 3 ¹ / ₂ "
Leaf Thickness	1"	1 ¹ / ₈ "	3 @ 0.401"
			14 @ 0.360"
No. of Leaves	Ten	Nine	Seventeen
Shot peening, tension side	All leaves	Main, 2nd	& 3rd

††Special extra heavy duty rear springs obligatory with SWD 59 in Oil Field Service.

* Shortest available wheelbase for 5-speed transmission with B-L auxiliary installation.
 ** Shortest available wheelbase for 10-speed transmission with B-L auxiliary installation.
 # Recommended for Oil Field Service.

FRAME:

No. of cross-members
 and type, 174¹/₂" WB.....Two channel and one I-beam
 186¹/₂" WB.....Three channel and one I-beam
 199¹/₂" , 212¹/₂" and
 303¹/₂" WB.....Four channel and one I-beam
 Frame Reinforcement
 199¹/₂" and 212¹/₂" WB.....¹/₄" Fishplate
 #303¹/₂" WB.....³/₈" Fishplate (obligatory)

TIRES: (Overall width exceeds 96") Highway Tread

Size	11.00-24	*12.00-24	†13.00-24
Ply	12 P	14 P	16 P
Rims	8.0	8.5	8.5

* Available with SWD 59 only.

† Available Single Front only (only with 12.00-24 rear), recommended for Oil Field Service.

WHEELS:

TypeSteel Budd Disc
 (12.00 & 13.00 disc wheels have 1" studs, 13-3/16" bolt circle.)

FUEL TANK:

TypeStep
 Capacity50 gallons
 LocationLeft side

CHASSIS EQUIPMENT: Power divider lock-out; Tachograph with 24 hour chart (in place of Tachometer); Hubodometer, front left wheel; Mack linkage type, hydraulic power steering; full trailer brake and electrical connections including shut-off valves (no hose or cable; either hand control valve (for trailer brakes) or hand control valve, non-metering (for chassis rear brakes); Sealco drain valve; front wheel brake limiting valve; exhaust brake; front power take-off mixer drive arrangement 25,000 B.T.U. hot water cab heater with defrosters; vertical exhaust; air horn, twin; extra stop-tail light; I.C.C. lights; Bostrom driver seat with shock absorber; turn signals, front, one each side; West Coast type mirrors, enamel finish, one each side; spare rim or spare disc wheel; 8- or 12-ton jack.

B-81SX: Lube oil filters; Lubefiner 272C and Purolator full-flow in place of standard.

