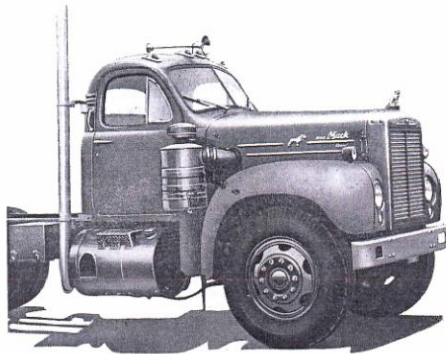




CAB MODEL

CA 30

FOR WEST COAST CHASSIS

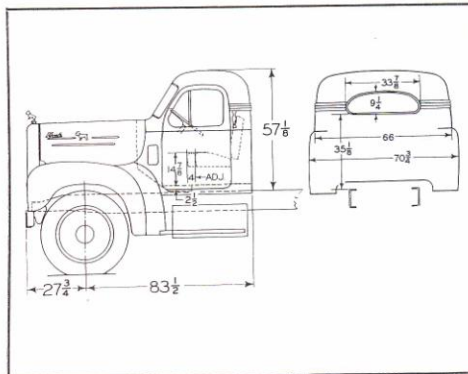
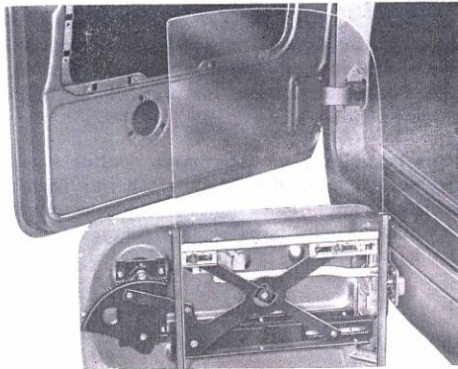


Designed for West Coast chassis, cab model CA 30 is of welded, all-steel construction for strength, unitized — cast radiator, fenders and cab joined together as a single unit and mounted at four points in rubber cushions for resiliency under road shock.

The cab has driverized features of comfort and safety such as a roomy and fully adjustable driver's position, leak and dust proof protection, easily read instruments and convenient controls, excellent road visibility and a universal-jointed steering column for a flatter steering wheel and

depressed floor area at the driver's position for greater driver room and comfort.

Accessibility to the powerplant is made convenient by a wide hood design, easily removable panels between fenders and hood, quickly demountable fenders and a full depth dash cavity permitting access to the rear of the engine. Inside the cab the instrument panel is removable, circuit fuses are easily accessible behind the glove compartment door and the side door mechanism, including glass is quickly demountable.



MACK TRUCKS, INC. • Plainfield, N. J.

CAB MODEL CA 30
FOR WEST COAST CHASSIS MODELS

MAKE	Mack
TYPE	Conventional
CONSTRUCTION	Welded, all-metal, unified cab and cowl.
MOUNTING	Unitized mounting of front-end sheet metal and cab in diamond shape arrangement—one point at either side of cowl, two at middle of cab back and two under radiator support. All points are mounted in identical rubber mounts to allow motion under chassis weaving and insulate vibration.
WIDTH OVERALL	70¾ inches, maximum (66 inches at belt rail).
WINDOWS	Two-section, fixed windshield, V-type, slanted backward, of flat non-shatterable plate glass. Safety sheet glass for crank-operated door windows, swing-out quarter windows and broad rear window.
EXTERIOR FINISH	Synthetic enamel in accordance with chassis order—red, green, yellow or blue are standard.
INTERIOR TRIM	Metallic green and beige color scheme.
SEATING	
Construction	All seat and back cushions coil spring, mounted on five-ply wood base. Back cushions and helper's seat cushion padded with felt, cotton, wadding and rubberized interlaced curled hair. Foam rubber topper for driver's seat cushion. All seat and back cushions covered with Fabrilite.
Adjustable Seat	Driver's seat and back cushion as a unit adjustable 4 inches fore and aft, individual adjustments of seat and back cushions. Driver's floor area depressed 2½ inches.
VENTILATION	
Cowl Vents	Left side, forward opening, screened ventilator for ram air intake. Right side opening to accommodate an optional cab heater.
Windows	Side door crank-down windows and push-out, wing-type quarter windows.
EQUIPMENT	Chrome plated hardware; interior light above each door with individual switch; dual bottom mounted windshield wipers air-actuated by a single motor; coat hook; grab handles one each side of door; left side sun visor; defroster nozzles; cigar lighter; ash tray; glove compartment.
INSTRUMENT PANEL	
Removable Panel	Speedometer; fuel gauge; lube oil pressure gauge; water temperature gauge; air pressure gauge; ammeter; electrical switches; headlamps hi-beam indicating light; cigar lighter. When applicable—tachometer; fuel oil pressure gauge with Cummins cold weather starting.
Main Board	Windshield wiper valve; throttle control; glove compartment, door of which conceals main circuit breaker block; open and close type ash tray. When applicable—gasoline engine choke control or Mack diesel engine stop control and emergency engine stop control; Cummins turbo- or supercharged engine cold weather start control and indicating light.
WEIGHT	Cab only (complete): 714 lbs.
APPLICATION	B-72, B-73, B-75 and B-77 chassis models.

Illustrations are not necessarily a representation of standard specifications with respect to all details.