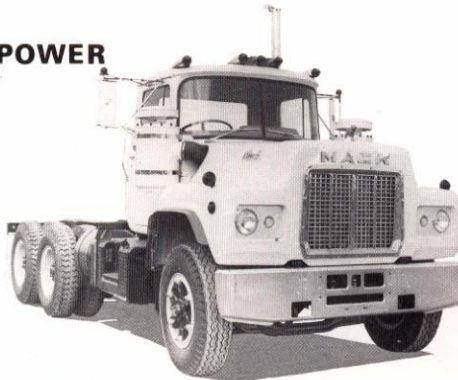


**NEW DYNAMIC
THERMODYNE 6 POWER**

**SIX-WHEEL
HEAVY DUTY CHASSIS
ON/OFF HIGHWAY**



**MACK
TRUCKS**

**MODEL
R612RS**

STANDARD SPECIFICATIONS

WHEELBASE: 4191 mm (165").

FRAME: 228 x 6.3 mm + 6.3 mm I.C.
(9" x 3.25" x .25" + .25" I.C.)
Material: Heat Treated Alloy Steel.
Section Modulus: 17.8; R.B.M. 1,960,000 in/lbs/rail.
Flush Type Front Bumper; Towing Provision.

FRONT AXLE: MACK FAW537C Wide Track;
Reverse Elliot, Forged I Beam.
Nom. Capacity: 5448 kg (12,000 lbs.).

Springs: 1397 x 89 mm (55" x 3.5");
Taper Leaf, Shackled Type.
Threaded Swing Shackle at rear.
No. of leaves: 3. Delrin inter-leaf liners.
Telescopic Shock Absorbers.

Brakes: Air, Cam & Lever;
Size: 419 x 127 mm, 2026 cm² (314"²).

BOGIE: MACK SS441C. Axle Spacing: 1270 mm (50").
Carriers: Dual Reduction, Top Mounted; CRDPC92 & CRD93
Inter-Axle Power Divider: In Forward Axle.
Ratios: 4.17, 4.64, 5.02, 5.32, 5.73, 6.34, 7.00,
7.13, 7.49, 8.34, 9.15
Fabricated Bogie Bracket.
Nom. Capacity: 19975 kg (44,000 lbs.).

Springs: 1270 x 101 mm (54" x 4");
Leaves, No. & thickness: 10 x 20.02 mm (.788").

Brakes: Air, Cam & Lever;
Size: 419 x 178 mm, 5934 cm² (16.5" x 7", 920"²).
Air Compressor: Tu Flo 501, 340070 cm³ (12 cu. ft.).
Air Reservoir, Isolated: 49200 cm³ (3,000 cu. in.).

Dual Circuit System
Breakaway Safety Valve; Hand Control Valve; Semi-Trailer
Connections; MGM Aux. Spring Brakes, with separate
release tank; Low Air Pressure Indicator, Buzzer Type;
Flexible Air Lines.

ENGINE: MACK Thermodyne Diesel, Mod. ETAZ(B)673.

Type: Turbocharged, Intercooled, 6 cyl. in-line.
Bore & Stroke: 123 x 152 mm (4.875" x 6").
Piston Displacement: 11.01 litres (672 cu. in.).
Max Power: 238 kW (320 b.h.p.) @ 2100 r.p.m.
Max Torque: 1360 Nm (1,000 lbs/ft) @ 1500 r.p.m.
Fuel Pump: American Bosch, APE6-BB.
Total Oil Cap.: 54.7 litres (12 Imp. Gall.).
E.S.I. "Plus" Disposable Oil & Fuel Filters System.
Air Cleaners: Donaldson, Dry Type.
Radiator, Frontal Area: 6450 cm² (1,000"²).
Coolant Cap.: 54 litres (11.8 Imp. Gall.).
Automatic Radiator Shutters.
Flex. Lines in Fuel Circuits.
Vert. Exhaust, w/pol. St. Steel Heat Shield,
chr. Tail Pipe w/"Rain Hat".

MACK Dynatard Engine Brake.

STARTING SYSTEM: Air, Ingersoll Rand (Key start).

ELECTRICAL SYSTEM: 12v, 85 Amp. Alternator.

CLUTCH: Two Plate, Ceramic Metallic Button Type Facings;
Dia.: 393 mm (15.5").

TRANSMISSION: MACK Maxitorque, TRTXL1070
Type: 12 Spd., 3 Countershaft Ext. Range
Overdrive Air-shift Splitter.
Ratio range: 14.44 to .78, Rev: 28.52 to 3.32 (5)
P.T.O. Provision: Left Side, 8-Std Std. S.A.E.
Right Side, 6-Std Std. S.A.E.
Opt. Extra Rear P.T.O. Drive:
51% eng. r/min in high range; 31% in low range.

DRIVESHAFT: Spicer 1810 Series;
Dia: 114 mm (4.5"); Thickness: 6.6 mm (.259").

STEERING: Manual Type;
Steering Wheel Dia.: 508 mm (20"); Ratio: 28.1:1.

WHEELS & TYRES: Wheels. Cast Steel Spoke.
Rims: 190 mm (7.5");
Tyres: 254 mm (10") x 508 mm (20") x 12 ply Rayon
(Aust. Mfr.).

FUEL TANKS: Steel, Square Step Type;
1 x 321 & 1 x 208 litres (1 x 70 & 1 x 46 Imp. Gall.).

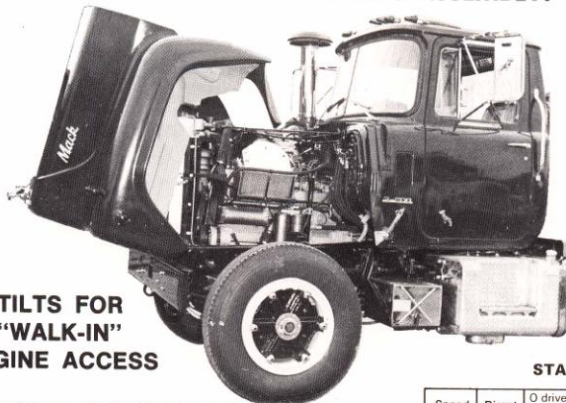
CAB: CAR493
Type: Bonnetted, Two Man, All Steel with R.P. (Fibreglass)
Tilting Eng. Hood/Fenders.
BBC: 2692/2844 mm (106"/112"); Two-Way Roof Vent;
Heater/Demister: Dual Windshield Wipers, Air, Single
Motor; Windshield Washers, Blade-mount.
Jets, Door-mount Reservoir w/integral Pump.
Dual West Coast R.V. Mirrors; Laminated
Windshield; Interior Sun Visor, driver's side; Fixed Frame,
Cushion Type Seats; De Luxe Door Trims.

PAINTWORK: Cabin: Single Tone Colour, e.g. Red, Green, White,
Yellow, Black.
Running Gear & Frame: Black.

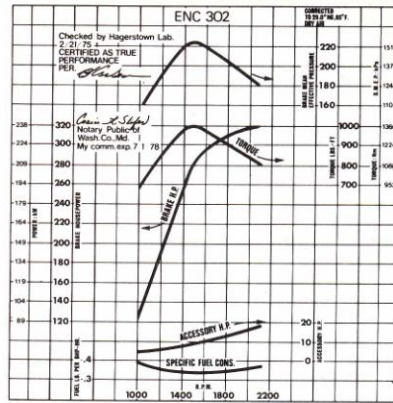
INSTRUMENTATION: Speedometer (km/hr); Exhaust Pyrometer;
Oil Pressure Gauge; Air Pressure Gauge; Voltmeter;
Coolant Temp. Gauge; Tachometer, single hand.
High Cool. Temp./Low Oil Press. Warn. Syst.,
w/bell audio/vis lamp alarms.

ELECTRICAL: Single Tone Horn; Automatic Reset Circuit
Breaker; "Bullet" type I.C.C. & Marker Lamps; Front Turn
Indicator lamps; Stop and Tail Lamps; Automatic Back-up
Lamp; Park Lamps; Semi-Trailer Connections.
12-tonne Jack, Handle, Wheel Wrench.

UNITISED ENGINE HOOD/FENDERS ASSEMBLY:



**TILTS FOR
"WALK-IN"
ENGINE ACCESS**



STANDARD TRANSMISSION: 12 Speed Maxitorque.

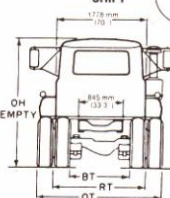
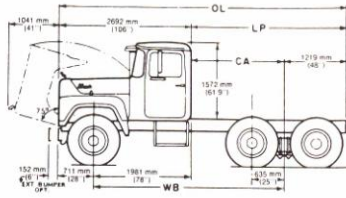
**OPTIONAL TRANSMISSION: TRDL1070 10 Speed
Maxitorque.**

**Compact O' drive Air-shift Splitter
SHIFT PATTERN & RATIO CHART**

Speed	Direct	O drive Split	Rev.
1st	8.59	6.68	28.52
2nd	4.99	3.89	16.59
3rd	2.84	2.21	9.42
4th	1.66	1.29	5.50
5th	1.00	.78	3.32

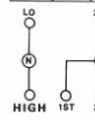
10-SPEED

AIR SPLITTER
SHIFT



Compact O' drive Ext. Range Air-shift Splitter

Speed	Front Comp.	Direct	O' drive Split	Double Comp.	Rev.
1st	14.44	8.59	6.68	11.23	28.52
2nd	—	4.99	3.89	—	16.59
3rd	—	2.84	2.21	—	9.42
4th	—	1.66	1.29	—	5.50
5th	—	1.00	.78	—	3.32



12-SPEED

W.B.	L.P.	C.A.	A.F.	O.L.	Turning Circle Dia. (Outer Edge of Tyre Ext.)	
					Right	Left
3733 (147)	2971 (117)	1752 (69)	1219 (48)	5664 (223)	17.1 (56)	17.1 (56)
4191 (165)	3429 (135)	2209 (87)	1219 (48)	6121 (241)	18.6 (61)	18.6 (61)
4648 (183)	3886 (153)	2667 (105)	1219 (48)	6578 (259)	20.1 (66)	20.1 (66)
4953 (195)	4191 (165)	2971 (117)	1219 (48)	6883 (271)	21.0 (69)	21.0 (69)
5257 (207)	4495 (177)	3276 (129)	1219 (48)	7188 (283)	21.9 (72)	21.9 (72)
5740 (226)	5094 (200)	3759 (148)	2235 (88)	8737 (344)	23.4 (77)	23.4 (77)
6985 (275)	8001 (315)	5003 (197)	2997 (118)	10744 (423)	27.4 (90)	27.4 (90)

Chassis dimensions are in millimetres, and (inches) and are for standard units unless otherwise denoted.
Turning circles are in metres, and (feet).

Tyre Size	O.H. Approx.	R.H.		Front Tread	O.T.	R.T.	B.T.
		Empty	Loaded				
254 x 508 (10.00 x 20)	2509 (98.8)	1011 (39.8)	963 (37.9)	1953 (76.9)	2490 (95.3)	1813 (71.4)	1206 (47.5)

Frame heights are subject to variations: 25 mm (1") empty, 127 mm (5") loaded.
Dimensions are in millimetres and (inches).

OPTIONAL EQUIPMENT:

STEERING: Power Assisted.

BOGIE: (SS441C), 1397 mm (55") Axle Spacing,

Cast Steel Bogie Brackets.

*SS55C Bogie: Rated 24970 kg (55,000 lbs.),

Chassis Model becomes R612RSX.

Pow. Divider Lockout, either Bogie.

FRONT AXLE: FAW617C; Rated 9080 kg (20,000 lbs.).

HORN/S: Air.

FUEL TANKS: Steel Step Type;

208, 265 & 321 litres (46, 58 & 70 Imp. Gall.)

SEAT/S: Air, Bostrom.

FRAME: *266 x 82.5 x 6.3 mm + 6.3 mm I.C.

(10.5" x 3.25" x .25" + 25" I.C.)

*Obligatory with SS55C Bogie

ELECTRICAL: Dual 178 mm (7") Headlamps.

PAINT COLOURS: To Client's Requirements in
Polyurethane Paint.

Illustrations are not necessarily representative of actual product.

The policy of Mack Trucks Australia Pty. Ltd. being one of continuous product improvement, the right is reserved to change specifications and illustrations without notice.

MACK TRUCKS AUSTRALIA PTY. LTD.

1728 IPSWICH RD., ROCKLEA, QUEENSLAND

P.O. Box 105, Brisbane Market. Q. 4106 Telephone: Brisbane 277 1644 Telegrams: "Macktrucks",
Brisbane. Telex: MTA AA41473

5/1978 WF & Co.